



# DPABI Animal Data Processing

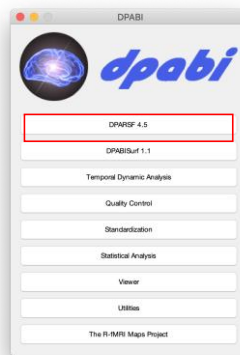
Chao-Gan YAN, Ph.D.  
严超赣

ycg.yan@gmail.com  
<http://rfmri.org>

Institute of Psychology, Chinese Academy of Sciences

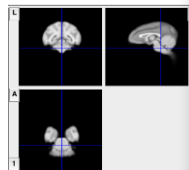
1

2



3

## DPARSF for Monkey Data



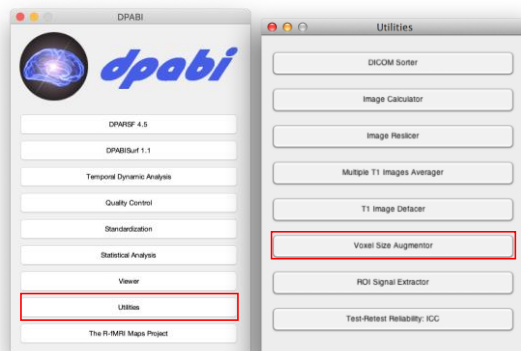
The monkey module is based on Rhesus Macaque Atlases for functional and structural imaging studies generated by Wisconsin ADHD Imaging Core. Please cite these papers when appropriate: McLaren, D.G., Koslitz, K.J., Oakes, T.R., Kronke, C.D., Kohan, S.G., Mitochik, J.A., Ingram, B.K., Johnson, S.C., 2009. A population average MRI-based atlas collection of the rhesus macaque. *NeuroImage* 45, 52-69. McLaren, D.G., Koslitz, K.J., Kastman, E.K., Beedin, B.R., Johnson, S.C., 2010. Rhesus macaque brain morphometry: a methodological



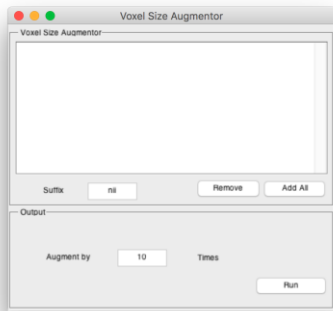
4



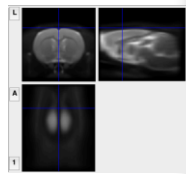
5



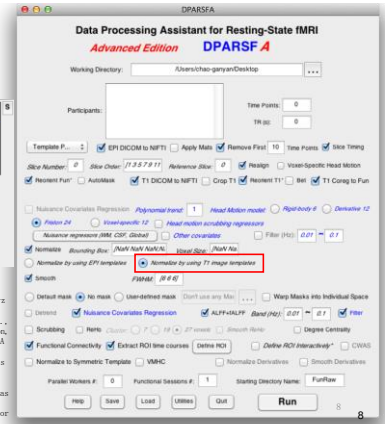
6



### DPARSF for Rat Data



The Rat module is based on a Rat T2 template generated by Dr. Adam J. Schwarz et al. Please cite this paper when appropriate: Schwarz, A.J., Bauckaert, A., Reese, T., Gozzi, A., Pazinos, G., Watson, C., Merlo-Pich, E.V., Sifone, A., 2006. A stereotaxic MRI template set for the rat brain with tissue class distribution maps and co-registered anatomical atlases: application to pharmacological MRI. NeuroImage 32, 538-550. (A T1 template was included as well. It's generated by normalizing 50 rats (two scans at PND45 or PND60) to the T2 template and then



**Thanks for your attention!**